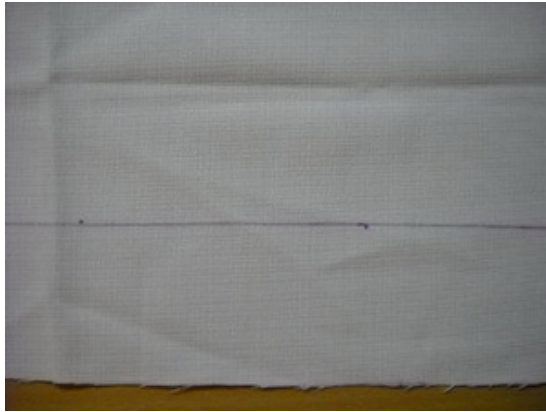
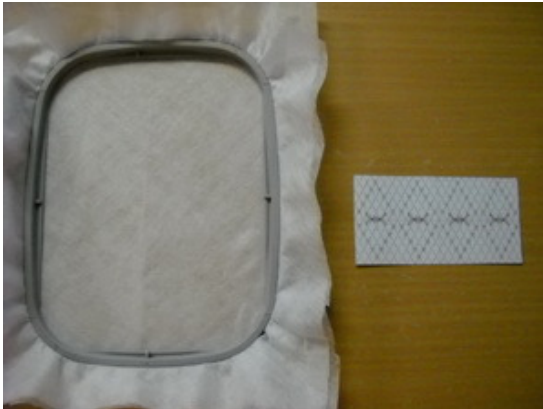


Threads n Scissors

Continuous Embroidery Design Placement



Mark the center line of your design on the fabric using a fabric marker. Mark the full length of the fabric.



Hoop two layers of water soluble stabilizer. Have your design print out on hand. Mark the center of the design. Some printouts have both horizontal and vertical lines marked. If your printout doesn't have this, then draw them in. Horizontal and vertical lines must meet in the middle of the design.

Materials

Water Soluble Stabilizer

Masking Tape

Print out of design

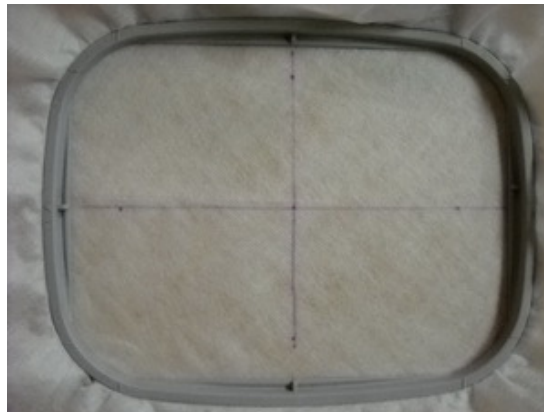
Fabric marker that washes out

Pins

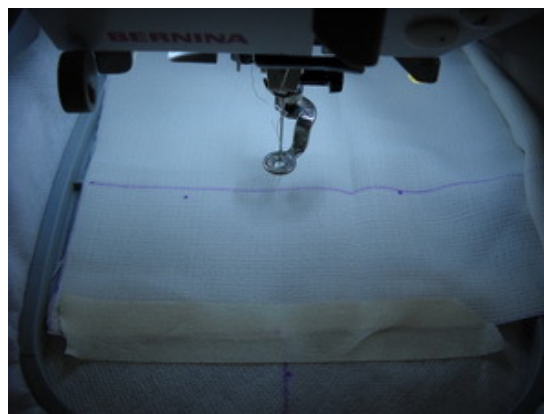
Threads n Scissors



Use your hoop grid to mark the centre of your hoop.

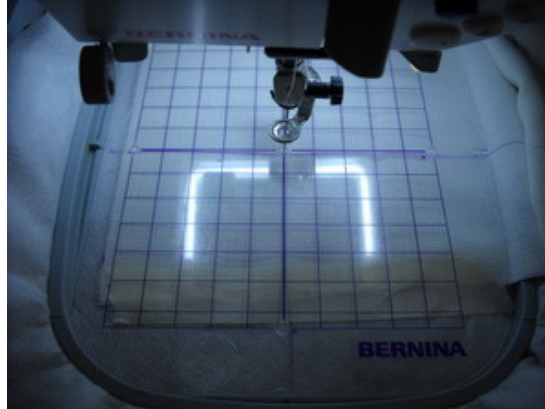


Remove the grid from your hoop and mark the horizontal and vertical lines on the stabilizer.



Place your fabric in the hoop matching the horizontal lines. Use masking tape and pins to hold the fabric in place. Do not place these in the area to be stitched.

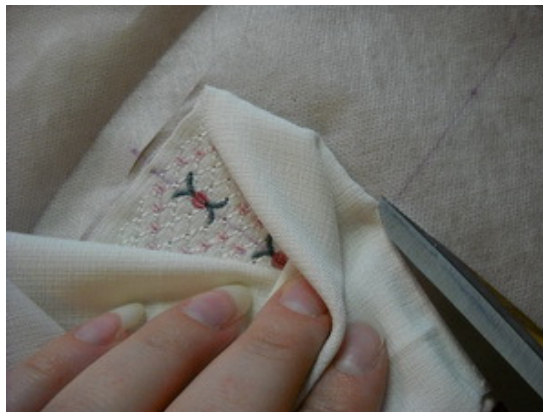
Threads n Scissors



Use your grid to check the fabric hasn't moved. Horizontal lines must match.



Stitch out your design. This makes the first piece of your continuous embroidery.



Remove the design from the hoop and carefully cut away the stabilizer.



Threads n Scissors



Using your design printout, place next to the stitched out design matching the centre line already drawn on the fabric.

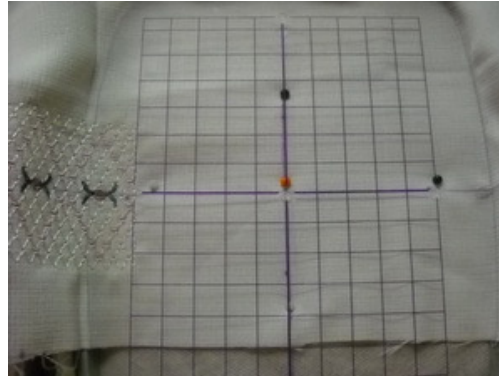


Mark the centre of the design. You need three marking points.

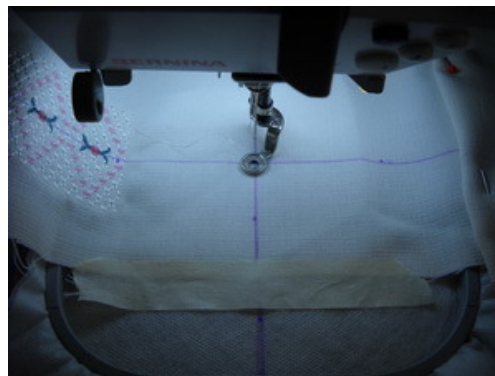


Draw a line through all three points.

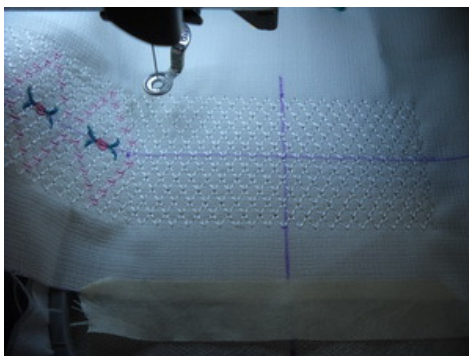
Threads n Scissors



Prepare your hoop the same way as you did for the first design again marking the centre of the hoop and drawing in the lines. Place your fabric in the hoop matching the horizontal and vertical lines. Use your hoop grid to help. Tape and pin the fabric in place.



Line up the needle of the machine to the centre point marked. Trace the design with your machine. You may need to nudge the fabric slightly. When you are ready to stitch, stitch out your next design. What you now have is a piece of continuous embroidery. This method is great for edgings and designs that require large areas. You can use this method to create horizontal and vertical design placement.



Enjoy Your Inspiration!!!