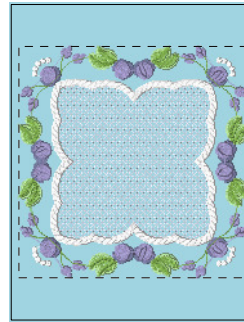


- 1. Berry Cream (Mar:1073)
- 2. Bluish Gray (Mar:1087)
- 3. Lavender Blue (Mar:1195)
- 4. Dairy Farm (Mar:1121)
- 5. Kilkenny (Mar:1284)
- 6. White (Mar:1179)

Design1.art

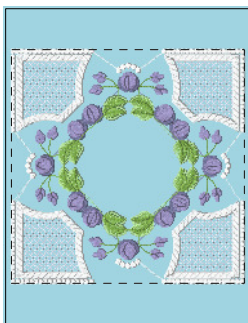
5.80x5.85 inches; 32,265 stitches
6 thread changes; 6 colors



- 1. Berry Cream (Mar:1073)
- 2. White (Mar:1179)
- 3. Bluish Gray (Mar:1087)
- 4. Lavender Blue (Mar:1195)
- 5. Dairy Farm (Mar:1121)
- 6. Kilkenny (Mar:1284)

Design10.art

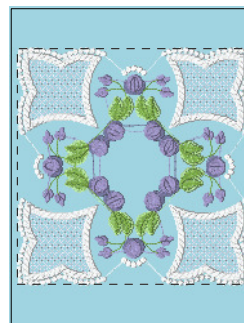
5.73x5.78 inches; 31,000 stitches
6 thread changes; 6 colors



- 1. Berry Cream (Mar:1073)
- 2. Bluish Gray (Mar:1087)
- 3. Lavender Blue (Mar:1195)
- 4. Dairy Farm (Mar:1121)
- 5. Kilkenny (Mar:1284)
- 6. White (Mar:1179)

Design11.art

5.82x5.84 inches; 32,217 stitches
6 thread changes; 6 colors



- 1. Berry Cream (Mar:1073)
- 2. White (Mar:1179)
- 3. Bluish Gray (Mar:1087)
- 4. Lavender Blue (Mar:1195)
- 5. Dairy Farm (Mar:1121)
- 6. Kilkenny (Mar:1284)

Design12.art

5.81x5.89 inches; 32,917 stitches
6 thread changes; 6 colors



- 1. Berry Cream (Mar:1073)
- 2. Bluish Gray (Mar:1087)
- 3. Lavender Blue (Mar:1195)
- 4. Dairy Farm (Mar:1121)
- 5. Kilkenny (Mar:1284)
- 6. White (Mar:1179)

Design2.art

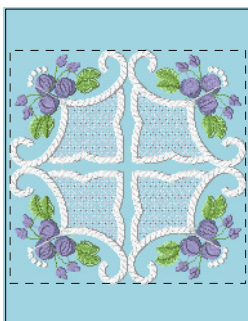
5.74x5.72 inches; 32,816 stitches
6 thread changes; 6 colors



- 1. Berry Cream (Mar:1073)
- 2. Bluish Gray (Mar:1087)
- 3. Lavender Blue (Mar:1195)
- 4. Dairy Farm (Mar:1121)
- 5. Kilkenny (Mar:1284)
- 6. White (Mar:1179)

Design3.art

5.83x5.81 inches; 31,870 stitches
6 thread changes; 6 colors



- 1. Berry Cream (Mar:1073)
- 2. Bluish Gray (Mar:1087)
- 3. Lavender Blue (Mar:1195)
- 4. Dairy Farm (Mar:1121)
- 5. Kilkenny (Mar:1284)
- 6. White (Mar:1179)

Design4.art

5.88x5.82 inches; 31,846 stitches
6 thread changes; 6 colors



- 1. Berry Cream (Mar:1073)
- 2. Bluish Gray (Mar:1087)
- 3. Lavender Blue (Mar:1195)
- 4. Dairy Farm (Mar:1121)
- 5. Kilkenny (Mar:1284)
- 6. White (Mar:1179)

Design5.art

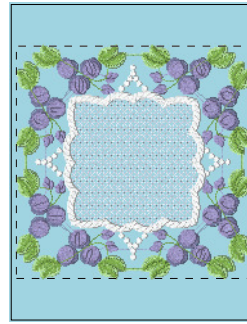
5.86x5.80 inches; 28,103 stitches
6 thread changes; 6 colors



- 1. Berry Cream (Mar:1073)
- 2. Bluish Gray (Mar:1087)
- 3. Lavender Blue (Mar:1195)
- 4. Dairy Farm (Mar:1121)
- 5. Kilkenny (Mar:1284)
- 6. White (Mar:1179)

Design6.art

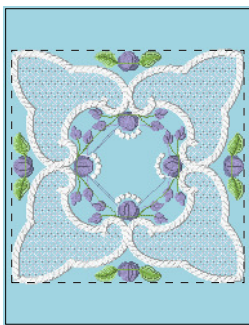
5.82x5.85 inches; 33,674 stitches
6 thread changes; 6 colors



- 1. Berry Cream (Mar:1073)
- 2. Bluish Gray (Mar:1087)
- 3. Lavender Blue (Mar:1195)
- 4. Dairy Farm (Mar:1121)
- 5. Kilkenny (Mar:1284)
- 6. White (Mar:1179)

Design7.art

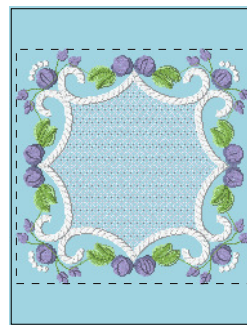
5.85x5.81 inches; 33,583 stitches
6 thread changes; 6 colors



- 1. Berry Cream (Mar:1073)
- 2. Bluish Gray (Mar:1087)
- 3. Lavender Blue (Mar:1195)
- 4. White (Mar:1179)
- 5. Dairy Farm (Mar:1121)
- 6. Kilkenny (Mar:1284)

Design8.art

5.80x5.80 inches; 31,322 stitches
6 thread changes; 6 colors



- 1. Berry Cream (Mar:1073)
- 2. Bluish Gray (Mar:1087)
- 3. Lavender Blue (Mar:1195)
- 4. Dairy Farm (Mar:1121)
- 5. Kilkenny (Mar:1284)
- 6. White (Mar:1179)

Design9.art

5.85x5.85 inches; 28,330 stitches
6 thread changes; 6 colors